

# 3D TENDER<sup>®</sup>

HIGH PERFORMANCE RESEARCH & DEVELOPMENT

## TENDER CATALOG 2026



YOUR REFERENCE FOR RIBS AND TENDERS





# 3D TENDER

Semi-rigid, polyester hulls, aluminum hulls, removable floors, ultra-light tenders with high-pressure inflatable bottoms - over 100,000 boats delivered worldwide since the 3D TENDER brand was launched in 2007. Performance, comfort, durability and competitive prices have always been the core values of 3D TENDER.

3D TENDER's robust approach to design and manufacturing gives both pleasure and commercial boat owners the confidence to go further and face the conditions that many others avoid.

The 3D TENDER range offers you an incomparable choice of models with exceptional quality/price ratios on the market!

## ENVIRONMENT

We pay great attention to environmental issues in the production of the 3D Tender boats. We make sure to use non-polluting, energy-efficient processes that respect the health of employees and users. The choice of raw materials is crucial, since it enables us to build boats that are not only highly resistant, but also close to nature.

## LIGHT WEIGHT

Aluminum hulls provide boats with strength and an unbeatable weight advantage. These boats can therefore be powered by small engines, which are less expensive, more fuel-efficient and reduce CO2 emissions.

## ALUMINIUM

Aluminium is one of the few materials that can be recycled indefinitely without losing its qualities and properties.

## POWDER COATING

3D Tender has chosen to use powder coatings. These powders are electrically charged and are sprayed onto the prepared surfaces before being dried in an oven. The finish is impeccable, and the painted surfaces are smooth and glossy.

Powder coatings offer considerable advantages over conventional liquid paints:

- No volatile organic compounds
- No solvents (no risk of fire, pollution, etc.)
- No pollution, as excess powder is easily collected by suction

Curing times and temperatures have been significantly improved to reduce process energy consumption.

# CONTENTS



REEF <b>NEW</b>	04
T33 <b>NEW</b>	08
ULTIMATE	10
FEDERLIGHT	12
SAIL TENDER <b>NEW</b>	14
TWIN AIR	16
ROUND AIR	18
VIB AIR	20
V-SHAPE	22
TWIN HYPALON	24
FAST CAT	26
QUICK ROLL <b>NEW</b>	28
WORLD TRAVEL	30
ACCESSORIES	32



NEW

# REEF CARBON

RIGID TENDER  
CARBON HULL

350/320/280/250

The REEF – The game-changing dinghy.

This dinghy is sold with its original sail, making it usable as a powered tender or as a sailing dinghy.

The REEF is 100% carbon fiber: ultra-light, strong, and stylish, ready for action. No more inflating tubes, no more punctures, no more worries. This tender is built to last and follow you anywhere, with complete peace of mind.

With its practical and robust design, the REEF allows you to transport your gear or reach your boat effortlessly. No inflation, no fragile tubes—just a reliable, efficient tender, ready for adventure.

REEF – Carbon, ultra-light, reliable. The tender that never lets you down.



## CARACTERISTIQUES

	350	320	280	250
Full lenght	3.50 m	3.20 m	2.80 m	2.50 m
Interior lenght	2.70 m	2.45 m	2.10 m	1.90 m
Width	1.75 m	1.75 m	1.75 m	1.75 m
Interior width	0.99 m	0.99 m	0.99 m	0.99 m
Depth	0.76 m	0.76 m	0.76 m	0.76 m
Weight	37 kg	35 kg	30 kg	28 kg
Passengers	6	5	5	4
Maximum power	20 HP	20 HP	10 HP	10 HP
Engine shaft	Simple S	Simple S	Simple S	Simple S
White carbon (sail included)	10 490€ Inc. tax	9 990€ Inc. tax	9 490€ Inc. tax	8 990€ Inc. tax
Gloss carbon (sail included)	11 990€ Inc. tax	11 490€ Inc. tax	10 990€ Inc. tax	10 490€ Inc. tax

## EQUIPEMENT

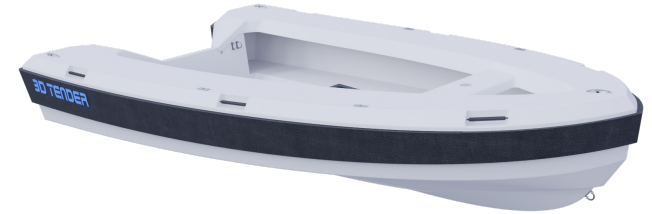
### STANDARD

Carbon fiber hull	Anti-skid pads	Front anchor bag	3DTENDER accessories bag
Carbon fiber floor	Side protective foam with cover	Side handles and front hundle	Aluminum engine plate
Integrated 6 lifting rings	Keel protection	3 retractable stainless steel cleats	Complete sailing rig :
Front towing ring	Wooden oars	Fuel tank straps	Daggerboard, rudder, mast, sail, rigging, daggerboard case plug
4 docking ring	Side storage bags	Launching wheels	

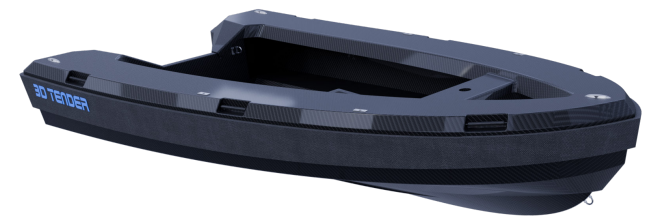
Dimensional and weight tolerances ±10%.

In tropical climates, the use of 3D TENDER PVC boats is excluded from the warranty. Prices and specifications are subject to change without notice.

WHITE CARBON



GLOSS CARBON





NEW

# REEF ALU

RIGID TENDER  
ALUMINIUM HULL

350/330/310/285

The REEF is 100% aluminum: solid, light, and ready for action. No more tubes to inflate, no more punctures, no more worries. This dinghy is designed to last and follow you everywhere, in complete serenity.

With its practical and robust design, the REEF allows you to transport your equipment or reach your boat effortlessly. No inflating, no fragile tubes, just a reliable, efficient dinghy ready for adventure.

REEF - Aluminum, solid, reliable. The dinghy that never lets you down.

## SPECIFICATIONS

	350	330	310	285
Full lenght	3.50 m	3.30 m	3.10 m	2.85 m
Interior lenght	2.80 m	2.60 m	2.45 m	2.25 m
Width	1.75 m	1.75 m	1.75 m	1.75 m
Interior width	1.10 m	1.10 m	1.10 m	1.10 m
Depth	0.76 m	0.76 m	0.76 m	0.76 m
Weight	75 kg	70 kg	65 kg	60 kg
Passengers	6	5	5	4
Max load weight	750 kg	700 kg	550 kg	500 kg
Maximum power	30 HP	20 HP	15 HP	10 HP
Engine shaft	Simple S	Simple S	Simple S	Simple S
Aluminium	5 290€ Inc. tax	4 990€ Inc. tax	4 790€ Inc. tax	4 490€ Inc. tax

## EQUIPEMENT

### STANDARD

Aluminum hull	Anti-skid pads	Wooden oars	Fuel tank straps
Aluminum floor	Side protective foam with cover	Side storage bags	Launching wheels
6 integrated lifting rings	Keel protection	Front anchor bag	3DTENDER accessories bag
Front towing ring	Seats with 1 cm thick EVA foam padding	Side handles and front handle	Aluminum engine plate
4 docking rings		3 retractable stainless steel cleats	Front platform with grip coating for the fuel tank

Dimensional and weight tolerances ±10%.  
In tropical climates, the use of 3D TENDER PVC boats is excluded from the warranty. Prices and specifications are subject to change without notice.





NEW

T33

ALUMINIUM TENDER  
ALUMINIUM HULL

The **T33** is the new aluminum tender that redefines comfort and ergonomics standards for its category. Made from high-quality marine-grade aluminum, both eco-friendly and recyclable, it combines robustness and lightness for optimal navigation. Its hull is painted white using an environmentally friendly process, the "powder coating," ensuring a smooth, durable finish and increased resistance to marine corrosion.

Equipped with four seats, the **T33** is designed to provide a comfortable navigation experience. The helm console, positioned at the very front, frees up generous space to maximize onboard storage. The angle of the transom and the bow have been carefully studied to guarantee excellent seaworthiness, even for a tender of this size. For added convenience, it features a boarding step that makes getting on board easier. The **T33** thus combines innovation, comfort, and environmental respect to meet the demands of sea enthusiasts.

CARACTERISTIQUES

T33	330
Full lenght	3.35 m
Interior lenght	2.40 m
Width	1.87 m
Interior width	1.10 m
Depth	0.80 m
Dead rise transom	12 °
Tube diameter	44 cm
Air chambers	4
Weight	160 kg
Tube inflation pressure	0.25 bar
Passengers	6
Maximum load weight	700 kg
Maxiumum power	30 HP
Engine shaft	Simple L
Design category	C
Fuel tank	25L

Hypalon 7 590€ Inc. tax

Dimensional and weight tolerances ±10%.  
In tropical climates, the use of 3D TENDER PVC boats is excluded from the warranty. Prices and specifications are subject to change without notice.



EQUIPEMENT

STANDARD

- Console and pilot seat
- Complete upholstery
- Double aluminum floor with EVA coating
- Integrated lifting rings in the hull
- Bench with foldable backrest
- Side platform for easy access
- Removable side cushion for seating and safe stepping on the tender
- Rear mast
- 25L fuel tank
- Storage compartments
- Rubbing strake
- Bow protection strip
- Inflator

OPTION

- Ladder
- Boat cover





# ULTIMATE

360/340/320/300/280/260/240

## ALUMINIUM TENDER ALUMINIUM HULL

The **ULTIMATE** are light and robust aluminum semi-rigid tenders, each model is equipped with an aluminum double floor and the flat deck is covered with an non skid EVA pads, for maximum comfort.

The double floor of the dinghy allows water to drain water from the bottom of the hull, the flat deck is covered with a non-slip EVA coating. The boats are in grey aluminum hull, guaranteeing the longevity of your boat.

The high strength marine grade aluminum is powder coated and heated to a high temperature to ensure a smooth, durable and environmentally friendly finish. The bow protection and ultra-wide tube protection give you the peace of mind you need when docking. The pronounced V-shape of the hull provides exceptional stability and passage through the waves. The boats are all equipped with 4 lifting rings for use on davits and a towing ring at the front of the hull.

## SPECIFICATIONS

	360	340	320	300	280	260	240
Full lenght	3.60 m	3.40 m	3.20 m	3.00 m	2.80 m	2.60 m	2.40 m
Interior lenght	2.67 m	2.51 m	2.33 m	2.16 m	1.98 m	1.80 m	1.61 m
Width	1.70 m	1.54 m	1.54 m	1.54 m	1.54 m	1.54 m	1.54 m
Interior width	0.80 m	0.76 m	0.76 m	0.76 m	0.76 m	0.76 m	0.76 m
Depth	0.79 m	0.79 m	0.79 m	0.79 m	0.79 m	0.79 m	0.79 m
Tube diameter	45 cm	39 cm	39 cm	39 cm	39 cm	39 cm	39 cm
Weight	67 kg	57 kg	50 kg	48 kg	44 kg	42 kg	38 kg
Tube inflation pressure	0.25 bar	0.25 bar	0.25 bar	0.25 bar	0.25 bar	0.25 bar	0.25 bar
Passengers	6	6	5	5	4	4	3
Maximum load weight	650 kg	550 kg	500 kg	450 kg	400 kg	350 kg	300 kg
Maximum power	25 HP	20 HP	20 HP	15 HP	15 HP	10 HP	8 HP
Engine shaft	Simple S	Simple S	Simple S	Simple S	Simple S	Simple S	Simple S
Fuel tank	35 L	21 L	21 L	21 L	21 L	21 L	21 L
PVC Grey	3 455€ <small>Inc. tax</small>	3 140€ <small>Inc. tax</small>	2 930€ <small>Inc. tax</small>	2 825€ <small>Inc. tax</small>	2 720€ <small>Inc. tax</small>	2 510€ <small>Inc. tax</small>	2 405€ <small>Inc. tax</small>
PVC Grey + Grey cover	4 085€ <small>Inc. tax</small>	3 770€ <small>Inc. tax</small>	3 455€ <small>Inc. tax</small>	3 350€ <small>Inc. tax</small>	3 140€ <small>Inc. tax</small>	2 930€ <small>Inc. tax</small>	2 825€ <small>Inc. tax</small>
Hypalon Grey	5 030€ <small>Inc. tax</small>	4 190€ <small>Inc. tax</small>	3 665€ <small>Inc. tax</small>	3 560€ <small>Inc. tax</small>	3 350€ <small>Inc. tax</small>	3 245€ <small>Inc. tax</small>	3 140€ <small>Inc. tax</small>
Hypalon Grey + Grey cover	5 660€ <small>Inc. tax</small>	4 715€ <small>Inc. tax</small>	4 190€ <small>Inc. tax</small>	4 085€ <small>Inc. tax</small>	3 875€ <small>Inc. tax</small>	3 665€ <small>Inc. tax</small>	3 560€ <small>Inc. tax</small>

Dimensional and weight tolerances ±10%.  
In tropical climates, the use of 3D TENDER PVC boats is excluded from the warranty. Prices and specifications are subject to change without notice.

## EQUIPMENT

- STANDARD**
- Aluminum hull with anti-corrosion treatment
  - Double aluminum floor
  - Marine grey powder paint
  - Four lifting rings integrated
  - Non-skid Eva pads on the entire deck
  - Tube protection band
  - Bow protection strip
  - Aluminum bench on rail
  - Inflator
  - Oar
  - Built-in fuel tank

### 360/340/320/300

- All standard equipments
- Double front storage box

### 280/260/240

- All standard equipments
- Front storage box

### OPTION (360/340/320/300/280)

Console (C11 / C12)





# FEDERLIGHT

ALUMINIUM TENDER  
ALUMINIUM HULL

365/335/315/285/265/245

The **FEDERLIGHT** is the new ultra-light aluminium dinghy which is available in 6 models from 2.45 m to 3.65 m. Our new range distinguish itself by the design of the hull and the quality of construction that allow it to combine lightness and performance. Made of high quality recyclable marine aluminium.

The hull design of each model has been studied for an exemplary marine behaviour for small boats... The dead rise at the transom and the bow varies from one model to another for a smooth sailing at sea.

The main advantage of the **FEDERLIGHT** is its weight, but it can nevertheless also carry large loads. For this new dinghy, 3DTENDER has developed a new, wider, lighter and more UV-resistant tube protection strip, that doesn't mark your boat when docking, and protects the tubes of your tender from front to back. For more comfort on board, the distribution of the elements on the tubes has been thought for a more ergonomic use...

The fabrics of our tubes are available in PVC Valmex® from Melher, or in Hypalon ORCA®.



## SPECIFICATIONS

	365	335	315	285	265	245
Full lenght	3.65 m	3.35 m	3.15 m	2.85 m	2.65 m	2.45 m
Interior lenght	2.80 m	2.60 m	2.40 m	2.10 m	1.90 m	1.67 m
Width	1.64 m	1.64 m	1.64 m	1.55 m	1.55 m	1.55 m
Interior width	0.80 m	0.80 m	0.80 m	0.80 m	0.80 m	0.80 m
Depth	0.75 m	0.75 m	0.75 m	0.75 m	0.75 m	0.75 m
Dead rise transom	15 °	14 °	14 °	16 °	15 °	10 °
Tube diameter	44 cm	44 cm	44 cm	42 cm	42 cm	42 cm
Weight	49 kg	44 kg	39 kg	36 kg	32 kg	29 kg
Tube inflation pressure	0.25 bar	0.25 bar	0.25 bar	0.25 bar	0.25 bar	0.25 bar
Passengers	6	5	5	4	4	3
Maximum load weight	750 kg	700 kg	550 kg	500 kg	450 kg	350 kg
Maxiumum power	20 HP	20 HP	15 HP	8 HP	8 HP	6 HP
Engine shaft	Simple S	Simple S	Simple S	Simple S	Simple S	Simple S

PVC Grey	3 140€ Inc. tax	2 510€ Inc. tax	2 300€ Inc. tax	2 090€ Inc. tax	1 985€ Inc. tax	1 880€ Inc. tax
PVC White	3 140€ Inc. tax	2 510€ Inc. tax	2 300€ Inc. tax	2 090€ Inc. tax	1 985€ Inc. tax	1 880€ Inc. tax
PVC White + Black cover sunbrella	3 770€ Inc. tax	3 035€ Inc. tax	2 825€ Inc. tax	2 573€ Inc. tax	2 436€ Inc. tax	2 300€ Inc. tax
Hypalon Grey	4 190€ Inc. tax	3 560€ Inc. tax	3 350€ Inc. tax	3 035€ Inc. tax	2 825€ Inc. tax	2 510€ Inc. tax
Hypalon White	4 190€ Inc. tax	3 560€ Inc. tax	3 350€ Inc. tax	3 035€ Inc. tax	2 825€ Inc. tax	2 510€ Inc. tax
Hypalon White + Black cover sunbrella	4 820€ Inc. tax	4 085€ Inc. tax	3 875€ Inc. tax	3 518€ Inc. tax	3 276€ Inc. tax	2 930€ Inc. tax

## EQUIPMENT

### STANDARD

- Front platform with grip coating for the fuel tank
- Fuel tank straps
- Oars
- Oarlock and oar attachments for dual arrangement
- Fuel hose straps
- Tube protection strip
- Non-slip deck coating
- Composite bench
- Storage bag under bench
- 4 carrying handles
- 4 reinforced aluminum ring
- 4 lifting aluminum rings
- 4 docking rings
- 1 reinforced towing ring
- 3DTENDER aluminum plate for engine mounting
- Repair kit
- Pump
- 3DTENDER accessories bag

### 335 / 365

Front locker

Dimensional and weight tolerances ±10%.

In tropical climates, the use of 3D TENDER PVC boats is excluded from the warranty. Prices and specifications are subject to change without notice.



NEW

# SAIL TENDER

**FOLDABLE TENDER  
INFLATABLE FLOOR**

280

The **Sail Tender** by 3D Tender is a versatile boat that can be used both as a classic tender and as a **fun sailing dinghy**. In just **under 10 minutes**, you can transform it into a sailboat — simply install the mast, rudder, daggerboard, and sail using the quick and easy rigging kit.

Perfect for adults looking for a practical, multipurpose tender, and great fun for kids who want to experience the joy of sailing! Compact, lightweight, and easy to handle, the Sail Tender brings versatility and adventure to every trip on the water.



## SPECIFICATIONS

	<b>280</b>
Full lenght	2.80 m
Width	1.50 m
Tube diameter	40 cm
Air chambers	3
Weight	27 kg
Pression Tube inflation pressure	0.25 bar
Passengers	4
Maxiumum power	6 HP
Engine shaft	Simple S

**PVC Black/Blue, Black sail 1 990€ Inc. tax**

**PVC White, White sail 1 990€ Inc. tax**

Dimensional and weight tolerances ±10%.

In tropical climates, the use of 3D TENDER PVC boats is excluded from the warranty. Prices and specifications are subject to change without notice.

## EQUIPMENT

### STANDARD

#### Boat :

Towing rings (6)  
Air pump  
Repair kit  
Storage bag

#### Rigging kit :

Removable daggerboard trunk  
Oars (2)  
Removable mast step  
Daggerboard  
Lifting rudder  
Mast (4 sections)  
Boom (2 sections)  
Sail (3 battens, reefing point)  
Blocks and rope kit  
Storage bag

## BLACK SAIL



## WHITE SAIL







# TWIN AIR

**FOLDABLE TENDER  
INFLATABLE FLOOR**

290/270/250/230/200/180/160

3D Tender has developed the **SUPERLIGHT TWIN AIR** range in order to meet the demands of boaters. Inflatable, foldable, compact, the Twin Air is the lightest tender on the market. Its light weight and small size will make your life easier on board. It can be easily stored in its backpack.

The **TWIN AIR** is designed with a high-pressure inflatable Drop Stitch honeycomb floor, providing great stability on board. The one-piece, non-removable floor is glued directly to the boat structure. Its conical tubes provide maximum buoyancy. It is equipped with 4 stainless steel lifting rings for use on davits or other.

The 3D Tender team has selected for this product, the best PVC fabric on the market made in Germany by the brand Mehler. This fabric called Valmex® has been tested under different sailing conditions and has met our brand's requirements in terms of quality and durability.

Like all folding dinghies in the 3D Tender range, the **TWIN AIR** is equipped with an adjustable aluminum bench, a pair of oars, an inflator and a carry bag.



## SPECIFICATIONS

	290	270	250	230	200	180	160
Full lenght	2.90 m	2.70 m	2.50 m	2.30 m	2.00 m	1.80 m	1.60 m
Interior lenght	2.34 m	2.15 m	1.95 m	1.77 m	1.45 m	1.26 m	1.06 m
Width	1.36 m	1.35 m	1.35 m	1.34 m	1.31 m	1.29 m	1.29 m
Interior width	0.67 m	0.67 m	0.67 m	0.66 m	0.63 m	0.62 m	0.61 m
Tube diameter	34-40 cm	34-40 cm	34-40 cm	32-36 cm	32-35 cm	32-35 cm	30 cm
Air chambers	3+1	3+1	3+1	2+1	2+1	2+1	2+1
Weight	16.9 kg	15.8 kg	14.5 kg	13.8 kg	11.9 kg	10.8 kg	9.6 kg
Floor inflation pressure	0.80 bar	0.80 bar	0.80 bar	0.80 bar	0.80 bar	0.80 bar	0.80 bar
Pression tube	0.25 bar	0.25 bar	0.25 bar	0.25 bar	0.25 bar	0.25 bar	0.25 bar
Passengers	4	4	3	2	2	2	1
Maximum load weight	510 kg	484 kg	450 kg	350 kg	250 kg	200 kg	180 kg
Maximum power	8 HP	6 HP	6 HP	4 HP	2.5 HP	2.5 HP	2.5 HP
Engine shaft	Simple S	Simple S	Simple S	Simple S	Simple S	Simple S	Simple S
Bag dimensions	98x48x28cm	98x48x28cm	90x48x28cm	90x45x28cm	90x45x28cm	90x45x28cm	90x45x26cm
PVC White	1 250€ <i>Inc. tax</i>	1 208€ <i>Inc. tax</i>	1 040€ <i>Inc. tax</i>	935€ <i>Inc. tax</i>	893€ <i>Inc. tax</i>	830€ <i>Inc. tax</i>	788€ <i>Inc. tax</i>
PVC Black	1 250€ <i>Inc. tax</i>	1 208€ <i>Inc. tax</i>	1 040€ <i>Inc. tax</i>	935€ <i>Inc. tax</i>	893€ <i>Inc. tax</i>	830€ <i>Inc. tax</i>	788€ <i>Inc. tax</i>

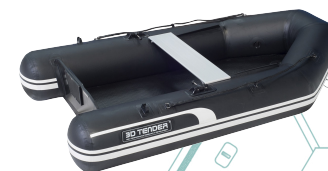
Dimensional and weight tolerances ±10%.

In tropical climates, the use of 3D TENDER PVC boats is excluded from the warranty. Prices and specifications are subject to change without notice.

## EQUIPMENT

### STANDARD

PVC Valmex® Mehler tube  
High pressure honeycomb floor  
Adjustable aluminum bench on slide  
Grips  
Inflator  
Repair kit  
Oars  
Transport backpack





# ROUND AIR

**FOLDABLE DINGHY  
INFLATABLE FLOOR**

250/235/200/180/160

The use of high quality, ultra-light materials makes the **SUPERLIGHT TWIN ROUND AIR** the lightest dinghy on the market. This dinghy is inflatable, foldable and easy to store in its carrying backpack.

The removable motor chair makes it easy to fold the dinghy, and the footprint is minimal.

The **TWIN ROUND AIR** is designed with a high-pressure Drop Stitch honeycomb inflatable floor that provides great stability on board. The one-piece floor, which cannot be disassembled, is glued directly to the boat's structure.

The 3D Tender team has selected for this product the best PVC fabric on the market made in Germany by the brand Mehler. This fabric, called Valmex®, has been tested under different sailing conditions and has met our brand's requirements in terms of quality and durability.

Like all folding dinghies in the 3D Tender range, the **ROUND AIR** comes with an adjustable aluminum bench, a pair of oars, an inflator and a carry bag.

## SPECIFICATIONS

	250	235	200	180	160
Full lenght	2.50 m	2.35 m	2.00 m	1.80 m	1.60 m
Interior lenght	1.78 m	1.63 m	1.34 m	1.23 m	1.03 m
Width	1.33 m	1.33 m	1.15 m	1.02 m	1.01 m
Interior width	0.61 m	0.61 m	0.48 m	0.44 m	0.43 m
Tube diameter	36 cm	36 cm	33 cm	28.5 cm	28.5 cm
Air chambers	2	2	2	2	2
Weight	12.2 kg	11.8 kg	9.2 kg	7 kg	6.5 kg
Floor inflation	0.80 bar	0.80 bar	0.80 bar	0.80 bar	0.80 bar
Pression tube	0.25 bar	0.25 bar	0.25 bar	0.25 bar	0.25 bar
Passengers	3	2	2	2	1
Maximum load	400 kg	350 kg	250 kg	200 kg	180 kg
Maximum power	2.5 HP	2.5 HP	2.5 HP	-	-
Engine shaft	Simple S	Simple S	Simple S	Simple S	Simple S
Bag dimensions	70x45x32cm	70x45x32cm	70x45x30cm	70x45x27cm	70x45x26cm
<b>PVC Black</b>	<b>998€ Inc. tax</b>	<b>935€ Inc. tax</b>	<b>893€ Inc. tax</b>	<b>788€ Inc. tax</b>	<b>725€ Inc. tax</b>
<b>PVC White</b>	<b>998€ Inc. tax</b>	<b>935€ Inc. tax</b>	<b>893€ Inc. tax</b>	<b>788€ Inc. tax</b>	<b>725€ Inc. tax</b>

Dimensional and weight tolerances ±10%.

In tropical climates, the use of 3D TENDER PVC boats is excluded from the warranty. Prices and specifications are subject to change without notice.

## EQUIPMENT

### STANDARD

PVC Valmex® Mehler tube  
High pressure honeycomb floor  
Modular motor support  
Adjustable aluminum bench on slide  
Grips  
Inflator  
Repair kit  
Oars  
Transport backpack





# VIB AIR 330/300/280/250/210

## FOLDABLE TENDER INFLATABLE FLOOR

With its gull wing shaped hull, the **SUPERLIGHT TWIN VIB AIR** is designed for boaters looking for speed and comfort, especially in rough seas. Inflatable, foldable, easy to store in its carrying backpack, the **VIB AIR** is equipped with two interchangeable protective covers (one black and one white) in neoprene for maximum durability.

The **VIB AIR** is designed with a high pressure Drop Stitch honeycomb inflatable floor providing great stability on board. The one-piece, non-removable floor is glued directly to the boat structure. It is equipped with 4 stainless steel lifting rings for use on davits or other. The 3D Tender team has selected for this product the best PVC fabric on the market made in Germany for the Mehler brand.

This fabric, called Valmex®, has been tested under various sailing conditions and has met our brand's requirements in terms of quality and durability.

## SPECIFICATIONS

	330	300	280	250	210
Full lenght	3.30 m	3.00 m	2.80 m	2.50 m	2.10 m
Interior lenght	2.16 m	1.85 m	1.83 m	1.55 m	1.40 m
Width	1.53 m	1.53 m	1.53 m	1.50 m	1.31 m
Interior width	0.68 m	0.68 m	0.68 m	0.68 m	0.60 m
Tube diameter	42 cm	42 cm	42 cm	42 cm	36 cm
Air chambers	3+1	3+1	3+1	2+1	2+1
Weight	34 kg	29 kg	25 kg	22 kg	19 kg
Floor inflation pressure	0.80 bar	0.80 bar	0.80 bar	0.80 bar	0.80 bar
Pression tube	0.25 bar	0.25 bar	0.25 bar	0.25 bar	0.25 bar
Passengers	4	4	4	3	2
Max. load weight	566 kg	510 kg	500 kg	450 kg	250 kg
Maximum power	15 HP	10 HP	8 HP	6 HP	4 HP
Engine shaft	Simple S	Simple S	Simple S	Simple S	Simple S
Bag dimensions	90x45x40cm	90x45x35cm	90x45x32cm	90x45x30cm	90x45x28cm

<b>PVC Black</b>	<b>1775€</b> <i>Inc. tax</i>	<b>1418€</b> <i>Inc. tax</i>	<b>1313€</b> <i>Inc. tax</i>	<b>1208€</b> <i>Inc. tax</i>	<b>1040€</b> <i>Inc. tax.</i>
------------------	------------------------------	------------------------------	------------------------------	------------------------------	-------------------------------

Dimensional and weight tolerances ±10%.

In tropical climates, the use of 3D TENDER PVC boats is excluded from the warranty. Prices and specifications are subject to change without notice.

## EQUIPMENT

### STANDARD

PVC Valmex® Mehler tube  
High pressure honeycomb floor  
2 neoprene tube covers, velcro fastened (one black and one white)  
Adjustable aluminium bench on slide rail  
Davits  
3 carrying handles  
Ultra wide drag strip  
Grips  
Inflator  
Repair kit  
Oars  
Transport backpack







# TWIN V-SHAPE

FOLDABLE TENDER  
INFLATABLE FLOOR

290/270/250/230/200/180/160

Inflatable, foldable, easy to store in its backpack, the **TWIN V-SHAPE** is a light, ultra rigid model with a V-shaped hull. Its gull wing shape offers excellent sea passage. The **V-SHAPE** is designed with a Drop Stitch high-pressure inflatable floor that provides great stability on board. The one-piece floor, which cannot be removed, is glued directly to the boat's structure.

It is equipped with 4 stainless steel lifting rings for use on davits or other. The 3D Tender team has selected for this product the best PVC fabric on the market made in Germany by the brand Mehler.

This fabric called Valmex® has been tested under different sailing conditions and has met our brand's requirements in terms of quality and durability.



## SPECIFICATIONS

	290	270	250	230	200	180	160
Full lenght	2.90 m	2.70 m	2.50 m	2.30 m	2.00 m	1.80 m	1.60 m
Interior lenght	2.34 m	2.15 m	1.95 m	1.77 m	1.45 m	1.26 m	1.06 m
Width	1.36 m	1.35 m	1.35 m	1.34 m	1.31 m	1.29 m	1.29 m
Interior width	0.67 m	0.67 m	0.67 m	0.66 m	0.63 m	0.62 m	0.61 m
Tube diameter	34-40 cm	34-40 cm	34-40 cm	32-36 cm	32-35 cm	32-35 cm	30 cm
Air chambers	3	3	3	3	3	2	2
Weight	20.3 kg	18.9 kg	17.4 kg	16.6 kg	14.3 kg	12.9 kg	11.5 kg
Floor inflation pressure	0.80 bar	0.80 bar	0.80 bar	0.80 bar	0.80 bar	0.80 bar	0.80 bar
Pression tube	0.25 bar	0.25 bar	0.25 bar	0.25 bar	0.25 bar	0.25 bar	0.25 bar
Passengers	4	4	3	2	2	2	1
Maximum load weight	510 kg	484 kg	450 kg	350 kg	250 kg	200 kg	180 kg
Maximum power	8 HP	6 HP	6 HP	4 HP	4 HP	2.5 HP	2.5 HP
Engine shaft	Simple S	Simple S	Simple S	Simple S	Simple S	Simple S	Simple S
Bag dimensions	98x48 x28cm	98x48 x28cm	98x48 x28cm	98x45 x28cm	90x45 x28cm	90x45 x28cm	90x45 x26cm

PVC Grey / Black	1355€ Inc. tax	1313€ Inc. tax	1208€ Inc. tax	1040€ Inc. tax	998€ Inc. tax	935€ Inc. tax	893€ Inc. tax
PVC Grey / White	1355€ Inc. tax	1313€ Inc. tax	1208€ Inc. tax	1040€ Inc. tax	998€ Inc. tax	935€ Inc. tax	893€ Inc. tax

Dimensional and weight tolerances ±10%.

In tropical climates, the use of 3D TENDER PVC boats is excluded from the warranty. Prices and specifications are subject to change without notice.

## EQUIPMENT

### STANDARD

PVC Valmex® Mehler tube  
High pressure honeycomb floor  
Adjustable aluminum bench on slide  
Grips  
Inflator  
Repair kit  
Oars  
Transport backpack







# TWIN HYPALON

**FOLDABLE TENDER  
INFLATABLE FLOOR**

290/270/250/230

Inflatable, foldable, lightweight, easy to store in its carry bag, the **TWIN HYPALON** is a top of the range tender from 3D Tender.

It is designed with a high pressure Drop Stitch inflatable floor providing great stability on board and an EVA anti-slip foam cover for your comfort.

It is equipped with 4 stainless steel lifting rings for use on davits or other.

The 3D Tender team has selected for this product the best Hypalon fabric on the market, made in Belgium by the brand Orca® - Pennel & Flipo.

Hypalon fabric is resistant to extreme temperatures. For tropical areas it is essential to choose this fabric.

Like all folding tenders in the 3D Tender range, the **TWIN HYPALON** is equipped with an adjustable aluminium bench, a pair of oars, an inflator and a carry bag.



## SPECIFICATIONS

	290	270	250	230
Full lenght	2.90 m	2.70 m	2.50 m	2.30 m
Interior lenght	2.34 m	2.15 m	1.95 m	1.77 m
Width	1.36 m	1.35 m	1.35 m	1.34 m
Interior width	0.67 m	0.67 m	0.67 m	0.67 m
Tube diameter	34-40 cm	34-40 cm	34-40 cm	34-40 cm
Air chambers	3	3	3	3
Weight	23.4 kg	22.3 kg	21 kg	20.3 kg
Floor inflation pressure	0.80 bar	0.80 bar	0.80 bar	0.80 bar
Tube inflation pressure	0.25 bar	0.25 bar	0.25 bar	0.25 bar
Passengers	4	4	3	2
Maximum load weight	510 kg	484 kg	450 kg	350 kg
Maximum power	10 HP	8 HP	6 HP	4 HP
Engine shaft	Simple S	Simple S	Simple S	Simple S
Bag dimensions	98x48x38cm	98x48x38cm	98x48x38cm	98x45x38cm

<b>Hypalon Grey</b>	<b>2 615€</b> <i>Inc. tax</i>	<b>2 510€</b> <i>Inc. tax</i>	<b>2 363€</b> <i>Inc. tax</i>	<b>2 258€</b> <i>Inc. tax</i>
---------------------	-------------------------------	-------------------------------	-------------------------------	-------------------------------

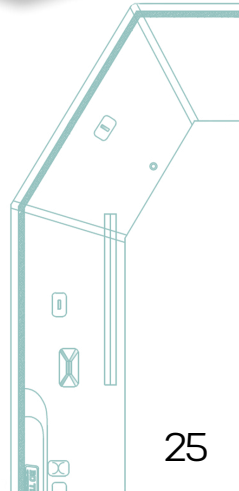
Dimensional and weight tolerances ±10%.

In tropical climates, the use of 3D TENDER PVC boats is excluded from the warranty. Prices and specifications are subject to change without notice.

## EQUIPMENT

### STANDARD

- Hypalon Orca® fabric
- High pressure honeycomb floor
- Adjustable aluminum bench on slide
- Grips
- Inflator
- Repair kit
- Oars
- Transport backpack







# TWIN FASTCAT

FOLDABLE TENDER  
INFLATABLE FLOOR

330/300/280/260/230/200

A new catamaran style dinghy design for this **TWIN FASTCAT**.

Inflatable, foldable, light, easy to store in its carry bag, the **FASTCAT** will bring you exceptional stability and unequalled speed with a low motorization. Unprecedented, this dinghy is entirely self-bailing when stationary! With its deck above the waterline, the water inside the dinghy drains naturally, so your feet will always be dry.

The **FASTCAT** is designed with a Drop Stitch high-pressure inflatable floor for stability on board and a non-slip EVA foam deck covering for comfort. This floor is one piece, non removable, and glued directly to the boat structure.

It is equipped with 4 stainless steel lifting rings for use on davits or other. The 3D Tender team has selected for this product the best PVC fabric on the market, made in Germany by the brand Mehler.



## SPECIFICATIONS

	330	300	280	260	230	200
Full lenght	3.30 m	3.00 m	2.80 m	2.60 m	2.30 m	2.00 m
Interior lenght	2.61 m	2.33 m	2.13 m	1.90 m	1.60 m	1.32 m
Width	1.72 m	1.66 m	1.66 m	1.58 m	1.53 m	1.48 m
Interior width	0.74 m	0.70 m	0.70 m	0.65 m	0.65 m	0.63 m
Tube diameter	48-29 cm	48-29 cm	48-29 cm	45-29 cm	42-29 cm	42-29 cm
Air chambers	3	3	3	3	3	3
Weight	34 kg	31 kg	27 kg	25 kg	21 kg	18 kg
Floor inflation pressure	0.80 bar	0.80 bar	0.80 bar	0.80 bar	0.80 bar	0.80 bar
Pression tube	0.25 bar	0.25 bar	0.25 bar	0.25 bar	0.25 bar	0.25 bar
Passengers	4	4	4	3	2	2
Maximum load weight	566 kg	510 kg	484 kg	450 kg	350 kg	250 kg
Maximum power	15 HP	10 HP	6 HP	6 HP	4 HP	4 HP
Engine shaft	Simple S	Simple S	Simple S	Simple S	Simple S	Simple S
Bag dimensions	100x65x45cm	100x65x40cm	100x60x40cm	100x60x40cm	100x55x35cm	100x55x35cm
PVC Olive / White	1 418€ Inc. tax	1 313€ Inc. tax	1 250€ Inc. tax	1 208€ Inc. tax	1 154€ Inc. tax	1 040€ Inc. tax
PVC Black / Light Grey	1 418€ Inc. tax	1 313€ Inc. tax	1 250€ Inc. tax	1 208€ Inc. tax	1 154€ Inc. tax	1 040€ Inc. tax
PVC Orange / White	1 418€ Inc. tax	1 313€ Inc. tax	1 250€ Inc. tax	1 208€ Inc. tax	1 154€ Inc. tax	1 040€ Inc. tax
PVC Grey / Light Grey	1 418€ Inc. tax	1 313€ Inc. tax	1 250€ Inc. tax	1 208€ Inc. tax	1 154€ Inc. tax	1 040€ Inc. tax
PVC Pink / White	1 418€ Inc. tax	1 313€ Inc. tax	1 250€ Inc. tax	1 208€ Inc. tax	1 154€ Inc. tax	1 040€ Inc. tax

Dimensional and weight tolerances ±10%.

In tropical climates, the use of 3D TENDER PVC boats is excluded from the warranty. Prices and specifications are subject to change without notice.

## EQUIPMENT

### STANDARD

PVC Valmex® Mehler tube  
High pressure drop stitch floor  
Adjustable aluminium bench on slide rail  
4 stainless steel lifting points  
Oars  
Inflator  
Repair kit  
Transport backpack





NEW

# QUICK ROLL

FOLDABLE TENDER  
SLATTED FLOOR

230/250/280/320

The **QUICK ROLL** range is the result of the Research & Development work carried out by 3D Tender, designed to offer a foldable, practical, and reliable tender for all boaters. Created to be easy to use, quick to assemble, and simple to store, it is aimed at owners looking for a high-performance tender that remains compact once folded.

Models in the **QUICK ROLL** range are equipped with a flat, rigid slatted floor, providing excellent onboard comfort. Combined with an inflatable keel, this floor ensures optimal stability, improved directional control, and safer handling on the water.  
The aluminum transom guarantees strength and durability, allowing the installation of either an electric or petrol tiller-steer outboard engine.



## SPECIFICATIONS

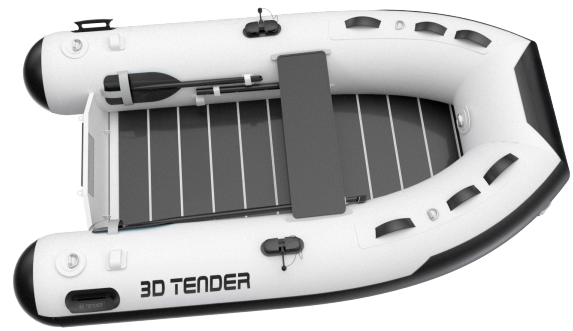
	320	280	250	230
Full lenght	3.20 m	2.80 m	2.50 m	2.30 m
Interior lenght	2.30 m	1.94 m	1.63 m	1.54 m
Width	1.61 m	1.61 m	1.61 m	1.37 m
Interior width	0.71 m	0.71 m	0.71 m	0.61 m
Tube diameter	43 cm	43 cm	36 cm	36 cm
Air chambers	3	4	3	2
Weight	36 kg	33 kg	30 kg	26 kg
Pression tube	0.25 bar	0.25 bar	0.25 bar	0.25 bar
Passengers	4+1	3	3	2
Maximum load weight	550 kg	500 kg	400 kg	350 kg
Maximum power	15 HP	10 HP	6 HP	4 HP
Engine shaft	Simple S	Simple S	Simple S	Simple S
PVC	1 390€ Inc. tax	1 190€ Inc. tax	1 090€ Inc. tax	990€ Inc. tax

Dimensional and weight tolerances ±10%.  
In tropical climates, the use of 3D TENDER PVC boats is excluded from the warranty. Prices and specifications are subject to change without notice.

## EQUIPMENT

### STANDARD

- PVC Valmex® Mehler tube
- Slatted floor
- Adjustable aluminium bench on slide
- Oars
- Transport backpack







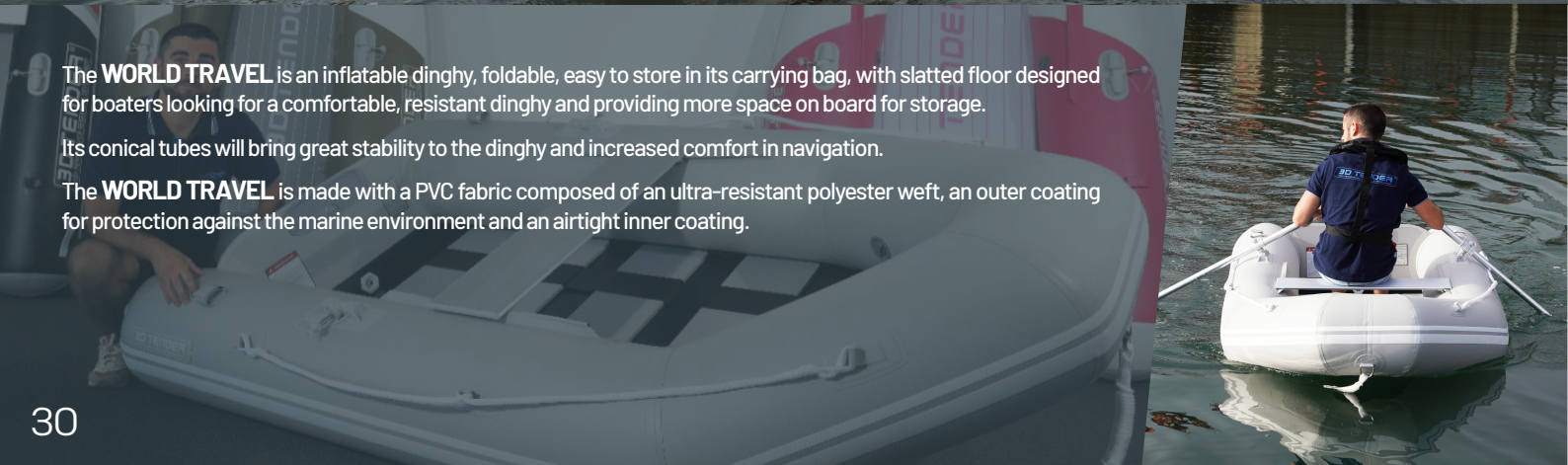
**FOLDABLE TENDER**  
**SLATTED FLOOR**

235/200

The **WORLD TRAVEL** is an inflatable dinghy, foldable, easy to store in its carrying bag, with slatted floor designed for boaters looking for a comfortable, resistant dinghy and providing more space on board for storage.

Its conical tubes will bring great stability to the dinghy and increased comfort in navigation.

The **WORLD TRAVEL** is made with a PVC fabric composed of an ultra-resistant polyester weft, an outer coating for protection against the marine environment and an airtight inner coating.



## SPECIFICATIONS

	235	200
Full lenght	2.35 m	2.00 m
Interior lenght	1.83 m	1.47 m
Width	1.31 m	1.31 m
Interior width	0.60 m	0.60 m
Tube diameter	37-22 cm	37-22 cm
Air chambers	2	2
Weight	21 kg	19 kg
Pression tube	0.25 bar	0.25 bar
Passengers	2	2
Maximum load weight	350 kg	350 kg
Maximum power	4 HP	2.5 HP
Engine shaft	Simple S	Simple S
Bag dimensions	98x49x35cm	98x49x35cm
<b>PVC Grey</b>	<b>472€ Inc. tax</b>	<b>440€ Inc. tax</b>
<b>PVC Black</b>	<b>472€ Inc. tax</b>	<b>440€ Inc. tax</b>

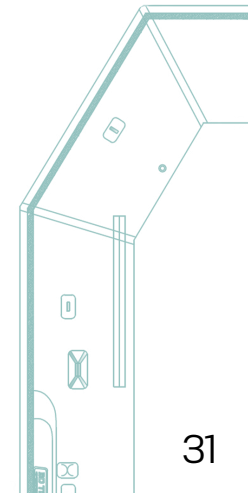
Dimensional and weight tolerances ±10%.

In tropical climates, the use of 3D TENDER PVC boats is excluded from the warranty. Prices and specifications are subject to change without notice.

## EQUIPMENT

### STANDARD

PVC Valmex® Mehler tube  
Slatted floor  
Adjustable aluminium bench on slide  
Oars  
Transport backpack





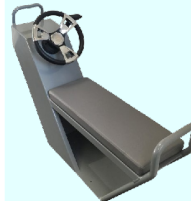
# ACCESSORIES

Price and specifications may change without notice.

## ACCESSORIES

### CONSOLES

#### CONSOLE JOCKEY ULTIMATE - C06

	LENGHT	180 CM
	WIDTH	30 CM
	HEIGHT	86 CM
	SEAT	46 CM
	PRICE	1 040€*

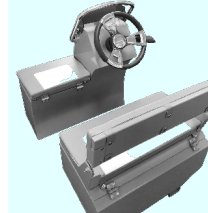
#### CONSOLE JOCKEY L - C07

	LENGHT	117 CM
	WIDTH	45 CM
	HEIGHT	90 CM
	SEAT	45 CM
	PRICE	1 259€*

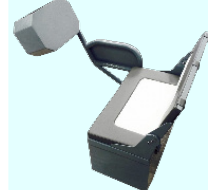
#### CONSOLE JOCKEY XL - C08

	LENGHT	130 CM
	WIDTH	35 CM
	HEIGHT	90 CM
	SEAT	60 CM
	PRICE	1 565€*

#### PACK TENDER- C11

	LENGHT	40 CM
	WIDTH	80 CM
	HEIGHT	105 CM
	SEAT	45 CM
	PRICE	1 775€*

#### CONSOLE ULTIMATE - C12

	LENGHT	40 CM
	WIDTH	80 CM
	HEIGHT	105 CM
	SEAT	45 CM
	PRICE	1 250€*

### ACCESSORIES FOR TENDER


#### AC BAG FOLDABLE TENDER

	≥ 250	66€*
	250 <	80€*


#### LAUCHING WHEELS - A05

	LENGHT	15 CM
	WIDTH	10 CM
	HEIGHT	35 CM
	FOR AIR DECKS ONLY	
	PRICE	136€*

#### LAUCHING WHEELS ALU - A06

	LENGHT	25 CM
	WIDTH	15 CM
	HEIGHT	50 CM
	MAX LOAD	100 KG
	PRICE	230€*

#### COVER FOLDABLE TENDER

	from 185 to 250	49€*
	from 270 to 320	56€*
	from 360 to 380	75€*

**\*ALL PRICE INCLUDE VAT**



# THE 3D TENDER SPIRIT

3D Tender is now present in 14 countries in Europe and beyond. A achievement made possible not only by 17 years of experience and expertise, but also by close collaboration with our dealers, who have placed their trust in us.

By putting all our efforts into producing top-quality boat models, we've been able to put together the most diverse product range on the market, while offering competitive prices to guarantee a sailing experience for all.

A company rooted in its Breton origins, it's our passion for the sea that drives us to innovate, thanks to a team of specialists

We are now number 1 in sales of RIBs and tenders in France, a position we owe to the proximity between ourselves and 3D Tender enthusiasts, whether it's to advise you or to come to your help at the slightest swell that might disrupt your navigation.

We are also grateful for the trust that other sea and sailing enthusiasts place in our products, which we will continue to design with passion and innovation.



Thank you for sailing with us! 





[international@3dtender.com](mailto:international@3dtender.com)



+33 2 29 02 72 85

**3D TENDER**  
HIGH PERFORMANCE RESEARCH & DEVELOPMENT